




Horry County
SOUTH CAROLINA
Committed to Excellence

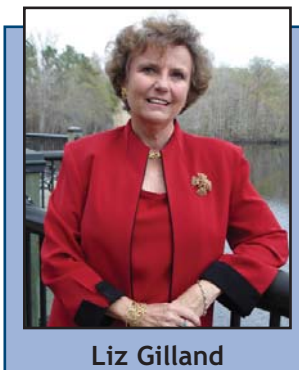
ANNUAL REPORT FISCAL YEAR 2008

Message From Your Chairman

Horry County continues to be the envy of most of South Carolina, despite the increasing difficulties that have darkened the present economy. While the nation and much of our state have been affected for several years, our area was fortunate to have felt the impact later, and the predictions are that we will recover much more quickly than other locations. That news is good. Economically, however, the news for the county is less rosy.

The drastic downturn in construction, noticeable in every area of our county, has caused a serious drop in county income from permits as well as deed and mortgage recording. Some improvement plans as well as major purchases in the Public Works department have been put on hold, and we have had a freeze on hiring for nearly half the year.

Despite those setbacks, we continue to celebrate good news for our county. This past year we improved our ISO rating for fire coverage for the entire county, which affects the price of homeowner insurance.



Liz Gilland
Chairman

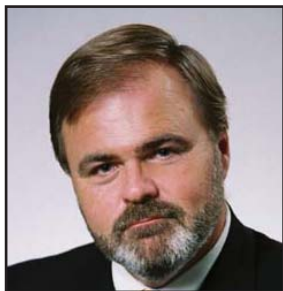
This was a huge undertaking, but the benefits are obvious to every property owner.

We also continue to protect Horry's most valuable resource – our beaches. Beach renourishment was completed, which added 750,000 cubic yards of sand and stretched 7.7 miles along our coast. Sand fencing and dune grass is also being added to protect our shoreline.

We continue to move forward with our countywide recreation program, opening our first ever county recreation centers in Little River and Bucksport, with one nearing completion along Hwy 57 in the North Strand area. Our emphasis on the importance of recycling was enhanced when we added our 24th recycling convenience center in Carolina Forest.

As you will read in this report, a lot of good things are happening in our community. Horry County will continue to be the premier destination of choice by millions of visitors, and a great place for education, for work and for enjoyment. We are blessed to call this place home.

Horry County Council



Marion Foxworth, III
Vice Chairman / District 3



Harold G. Worley
District 1



Brent Schulz
District 2



Michael L. Ryan
District 4



Howard D. Barnard, III
District 5



Bob Grabowski
District 6



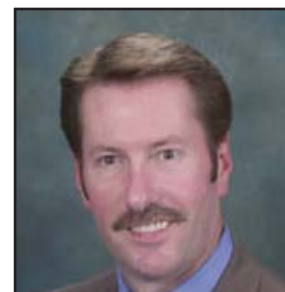
James R. Frazier
District 7



Carl Schwartzkopf
District 8



W. Paul Prince
District 9



Kevin J. Hardee
District 10



Al Allen
District 11

Council / Administrator Form of Government

Horry County has been operating under the Council/Administrator form of government since 1975. Under this type of government each member of council is elected from the district in which he/she lives and a chairman is elected at-large. The council consists of a chairman and 11 council members, each elected for four-year terms. The Council appoints a Clerk to Council, Register of Deeds Director and an Administrator.

Mission Statement:

Providing a community environment in which the citizens and visitors of Horry County can enjoy the highest quality of life.

Motto:

Committed to Excellence

Cover Photo: Crab pots on a Little River dock.
Photograph by Julie Bostian of SplashStudioPhotography.com

- Public Safety Initiatives -

Police Precincts

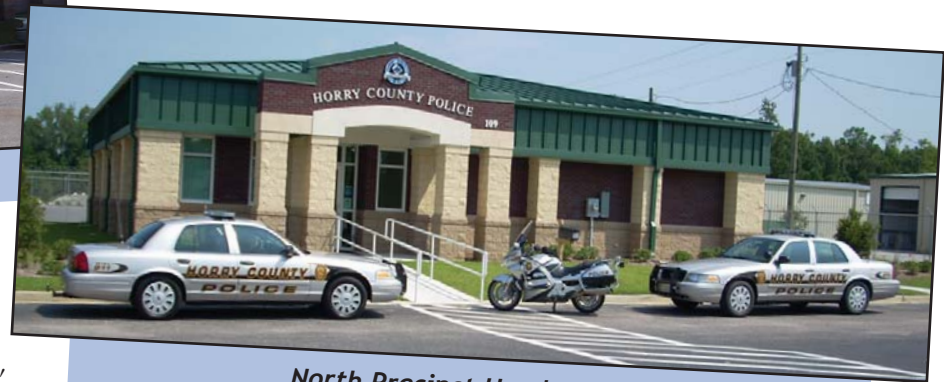
The Horry County Police Department implemented a new policing concept, which is referred to as the Precinct Plan. The precinct concept will provide for a



South Precinct Headquarters

more community-oriented approach to law enforcement activities in the county. The unincorporated portion of the county has been broken into three separate geographical areas,

with each featuring a Police Precinct Headquarters. The South Precinct Headquarters, located at the South Strand Government Center at 9630 Scipio Lane, opened in January 2008, and the North Precinct Headquarters, located at the Ralph Ellis Building at 107 Highway 57 North in Little River, opened in February 2008. The Central Precinct Headquarters is located at the existing M.L. Brown Jr. Public Safety Building, at 2560 Main Street in Conway.



North Precinct Headquarters

Fire ISO Rating

In Fiscal Year 2008, Horry County Fire/Rescue went through an intense ISO (Insurance Services Organization) rating. With the size of our county, it was one of the largest tasks that ISO had done. Horry County Fire/Rescue scored an overall ISO rating of five (5). This is an excellent rating for a county this large and means that residents living within five miles of any Horry County Fire/Rescue

Station will see a reduction in their Fire Insurance premiums. By logging onto www.horrycountyfirerescue.com residents can download a copy of the letter sent to the county notifying them of the new rate and share the letter with their insurance companies. The letter is located at the bottom of the page.

Fire Station

Horry County Fire/Rescue constructed a new fire station this fiscal year in the Carolina Forest/International Drive area, called the Carolina Bays Fire Station #45. It houses a volunteer engine and a career medic unit.

Jail Expansion

The Horry County Council has funded a major expansion of the J. Reuben Long Detention Center. This funding provided for a 128-bed addition to the Minimum Security Facility, and the construction of a 536-bed Housing Wing. The Minimum Security Facility was completed in the summer of 2008, and the main housing wing will be completed in early 2010.



Jail Expansion - Main Wing

CURRENT COUNTY INITIATIVES FISCAL YEAR 2008

Libraries

The Loris Library opened a new children's wing in November 2007, which added 36 percent more square feet to the current facility. The children's wing consists of two main rooms: one for children's programming and the other provides housing for pre-reader and beginning reader books, manipulative play items, and enticing kit displays.

Horry County Council has recently approved a budget that includes funding for up to five libraries. The three locations, which will be remodeled/expanded or newly constructed, include North Myrtle Beach, Surfside Beach, and Carolina Forest. Any remaining funds will go towards design efforts for Aynor and Bucksport.

Recreation

Horry County Council awarded the Parks and Recreation Department an additional mill of tax for the FY 07-08. The purpose of the tax was to begin the implementation of the Recreation Facility Plan, in which recreation centers are the first priority. The C.B. Berry Community & Historical Center, located in the Vereen Memorial Historical Gardens in Little River, was the first to open in May 1, 2008. The center features interpretive information and displays about wildlife in the park and local history, a multi-purpose meeting and activity rooms. The center is also available for rental.



North Strand Recreation Center

programs, summer camps, special events, and is available for rental.

The North Strand Recreation Center broke ground on May 29, 2008, and is estimated to be completed fall 2009. The 20,000 square-foot center will offer a gym,

two multi-purpose meeting rooms, an indoor walking track, and an exercise room. The open lobby will provide ample space to have games and a rock climbing wall. The

facility will also host after-school programs, summer camps, athletic and senior activities.



James R. Frazier Community & Workforce Center

The James R. Frazier Community & Workforce Center, opened on August 16, 2008, is a 15,600 square-foot facility, which features a career training room equipped with computers, a gymnasium with a hard floor surface suitable for basketball, and a multi-purpose meeting room that can be divided. The center will feature athletic programs, after-school



C.B. Berry Community & Historical Center

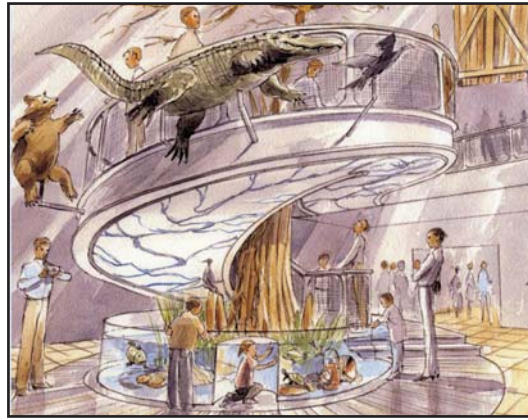
Recycling

On March 10, 2008, Horry County Council, in conjunction with the Horry County Solid Waste Authority, opened a newly constructed recycling center in Carolina Forest. The center is located on International Drive, near the Carolina Bays Fire Station #45. The center is manned and has receptacles to

receive household garbage, yard waste, recyclables and large "white good" items (things like old appliances and items that will not fit into a normal waste receptacle). The center is one of 24 convenience/recycling centers servicing citizens throughout Horry County.

Burroughs School Project (*Future Home of the Horry County Museum*)

The Burroughs School renovation project will provide Horry County with a state-of-the-art museum facility. The project will enable the museum to expand exhibits and programs. Visitors to the museum will see exhibits covering the military and political history of Horry County, agriculture and economy, natural history, children's discovery room, Native American exhibit, the story of the Grand Strand in the twentieth century, an open storage exhibit to display collections, textile and photographic exhibits, and a large changing exhibit area that will be built to Smithsonian



Institute Standards to accommodate nationally known traveling exhibits to Horry County. The main stairway exhibit, pictured left, will be the museum's centerpiece with a living black water aquarium to tell the story of how the rivers and waterways have impacted the culture and natural landscape of Horry County.

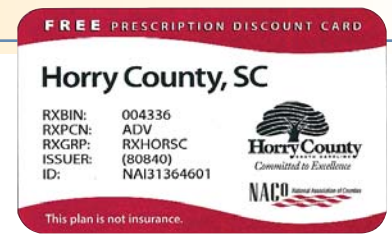
The renovation project will be broken down into four phases: selective demolition, installation of monumental stairs/aquarium foundation work, renovation of the structure, and installation of exhibits. Opening date is scheduled for winter 2009.

Prescription Discount Card Program

On January 1, 2008, Horry County launched a discount card program to help consumers cope with the high price of prescription drugs. To-date, 13,856 county residents have filled prescriptions with the cards at a discount averaging 22.04 percent and an average price savings of \$10.69 per prescription. The total price savings from the 13,856 Horry County users has been \$424,560.57.

The cards may be used by all county residents, regardless of age, income, or existing health coverage, and are accepted at the majority of the county's pharmacies. Cards are available at all

Horry County Memorial Library locations, the Horry County Veterans Office, the Horry County Public Information Booth in the Horry County Government & Justice Center, and all Treasurer Offices. Cards are also available at all five local health departments throughout Horry County. County residents can call toll free 1-877-321-2652 or visit www.horrycounty.org for more information about the program.



Beach Renourishment & Maintenance

The "Reach 3" Beach Renourishment project that widened the beaches in the Surfside Beach / Garden City Beach area of Horry County was completed during the winter of 2007-08, which added 750,000 cubic yards of sand and stretched 7.7 miles. Also the installation of a second row of sand fence and planting of dune grass is now underway. The new sand fence and dune grass will be placed between the existing single row of sand dunes and the shoreline.

Installation of the new sand fence began in November 2008 near the north end of Reach 3 (at the south end of Myrtle Beach State Park near Long Bay Estates), and work will proceed southward during the winter months. Currently (end of December 2008), the contractor



Beach Renourishment Project

(Court One Corporation of Norfolk, VA) is at the northern end of Garden City Beach with completion of fence installation at the south end of Reach 3 in the Georgetown County portion of Garden City Beach expected by March 2009.

Sand dunes are the first line of defense against the damaging waves of coastal storms. Dunes are very susceptible to wind erosion and depend upon beach grass and fencing for their growth and survival. The plant material helps to lower the wind velocities at the dune surface, causing wind blown sand to be deposited around the grass and fence line and be retained rather than blown away. The wind blown sand is trapped and dunes are created. A healthy dune system provides a reserve and source for nourishing a beach as it erodes.

BUDGET SUMMARY - FISCAL YEAR 2008

Revenue Highlights 2008

The county's General Fund tax revenue for property tax on real estate, was projected to grow in excess of 15 percent for the tax levy issued in Fiscal Year (FY) 2008. The new construction boom that had occurred since 2004 was reflected in the tax billings, and the Personal Property Tax billings also were expected to be closer to a five percent increase. There was a one mil increase associated with the FY 2008 Budget and the county-wide millage increased to 47.3 mils.

Revenues associated with land ownership transfer and development has slowed dramatically in FY 2007 as compared with the all time peak of FY 2006. For FY 2007 Documentary Stamps sold by the Register of Deeds on land transactions decreased from \$8.4 million to \$6.5 million, a decrease of 22.7 percent. This was still well above the activity level prior to the recent boom.

For FY 2007 the number of residential permits declined by 35 percent from 5,795 in FY 2006 to 3,756 for FY 2007. Total building department revenues declined from an all time high of \$9.1 million to \$6.9 million. For FY 2008 these revenues were anticipated to stabilize at the \$6.5 to \$7.0 million level.

For FY 2008 the Local Government Fund (the revenue the State sends back to the local jurisdiction) was budgeted to increase from \$10.1 million to \$10.9 million. Business License revenue continued to grow, and FY 2007 totaled almost \$4.8 million or about \$650,000 more than anticipated and remained steady. Other than fees associated with land transfers and permitted construction, the revenue picture for FY 2008 remained bright.

Revenue Sources

Taxes - The county's source of tax revenue is the real, personal and vehicle taxes levied against the citizens. Taxes are 47 percent of the total General Fund revenue source and are based on the assessed value of property.

The county's estimated assessed value for all real property, personal property and vehicles as of June 30, 2006, was \$1,492,666. The assessment rate of all property is determined by the state as shown in the following chart.

ASSESSED VALUES

Legal Residence	4 percent of market value
Rental & Secondary Property	6 percent of market value
Agricultural Real Estate (privately owned)	4 percent of market value
Agricultural Real Estate (corporate owned)	6 percent of market value
Commercial Real Property	6 percent of market value
Manufacturing Real & Personal Property	10.5 percent of market value
Utility Real & Personal Property	10.5 percent of market value
Personal Property	10.5 percent of market value
Personal Vehicles (January to December 2007)	6 percent of market value

The assessed value is then multiplied by the millage rate to determine the tax payment due to the county for county purposes only. The following example reflects the formula as applied to a \$200,000 primary residence in an unincorporated area of the county.

EXAMPLE *(unincorporated)*

\$200,000	Fair market value of home
x 4%	Assessment ratio (4% primary residence)
\$ 8,000	Assessed value
x .0700	Unincorporated county millage rate (70.0 mills in FY 2008)
\$ 560.00	Taxes due

(does not reflect school tax relief, Homestead credits, or municipality taxes)

If the residence was located within a municipality, the payment due to the county for county purposes would be determined as follows:

The assessed value is then multiplied by the millage rate to determine the tax payment due to the county for county purposes only. The following example reflects the formula as applied to a \$200,000 primary residence in an incorporated area of the county.

EXAMPLE *(incorporated)*

\$200,000	Fair market value of home
x 4%	Assessment ratio (4% primary residence)
\$ 8,000	Assessed value
x .0473	Countywide millage rate (47.0 mills in FY 2008)
\$ 378.40	Taxes due

(does not reflect school tax relief, Homestead credits, or municipality taxes)

Although a taxpayer receives just one property tax bill, there are other agencies that utilize that tax bill. These agencies are itemized on your bill, which include the School District, municipalities, special tax districts, etc. Any increase by any of these agencies will result in an increase to the overall tax bill.

BUDGET SUMMARY - FISCAL YEAR 2008

Expenditure Highlights

The Fiscal Year (FY) 2008 Budget included 100 new positions. Fifty-three of the 100 positions were for the Public Safety Division, which were added in five different departments. The Detention Department received 12 Detention Officers to staff the new minimum security building.

The Administration Division was increased by five new positions, three of which were for the Assessor to help with point-of-sale reappraisals and the new geographic information systems (GIS) activities. The Infrastructure and Regulation Division was increased by 42 positions, and over 30 of those positions were for the Recreation

Department, as contract labor was reclassified to employees.

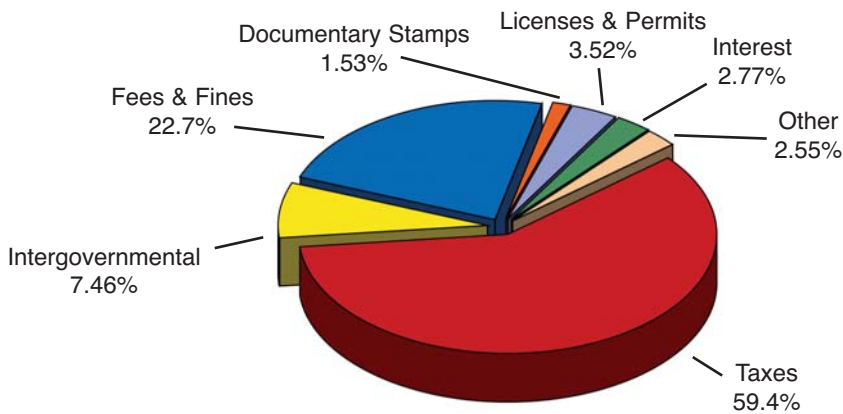
As always, Personal Services is the largest category of expenditures for Horry County. Personal services represented 68 percent of the total General Fund budget. Personal Services went up by \$7.1 million. The FY 2008 Budget included the use of \$2.5 million in excess fund balance, and it was anticipated that the excess fund balance remaining after the appropriation would exceed the required minimum fund balance by over \$1 million. There were no significant changes in the expenditures of the other funds.

Awards & Recognitions

- **Horry County Fire/Rescue** was awarded Large EMS Service of the Year 2008 in South Carolina.
- **Horry County Fire/Rescue** placed 6th in the World, in the 2008 Fire-fighter Combat Challenge in Las Vegas, NV.
- The **Horry County Finance Department** received the *Certificate of Achievement for Excellence in Financial Reporting* from the Government Finance Officers Association of the United States and Canada for its Comprehensive Annual Financial Report for the Fiscal Year Ended June 30, 2007.
- The Geospatial Information & Technology Association (GITA) announced that **Horry County** was named the recipient of the *2007 GITA Excellence Award* for the local government/public sector. The award recognizes the dedication, insight, and high degree of initiative in the outstanding application of geospatial technology.
- **Horry County** received the *Distinguished Budget Presentation Award* by the Government Finance Officers Association of the United States and Canada. This was Horry County's 18th consecutive award.
- South Carolina Counties Workers' Compensation Trust presented **Horry County** with three safety awards which included:
 - 1) *Outstanding Safety Achievement Award* for the Safety Training Program written by the Airport that could have cost up to \$48,000 if developed by an outside agency.
 - 2) *Outstanding Safety Achievement Award* for the Wellness and Fitness Program established in the Fire Rescue Department that reduced sick leave request and injuries incurred by improper movement or lack of ability.
 - 3) *Sustained Excellence in Risk Management Award* for the County's Continuous Improvement in the area of Risk Management including our safety activities and reduction in workers compensation claims in 2008 with a reduced experience rate of 1.20 for 2008 and 1.08 for 2009.

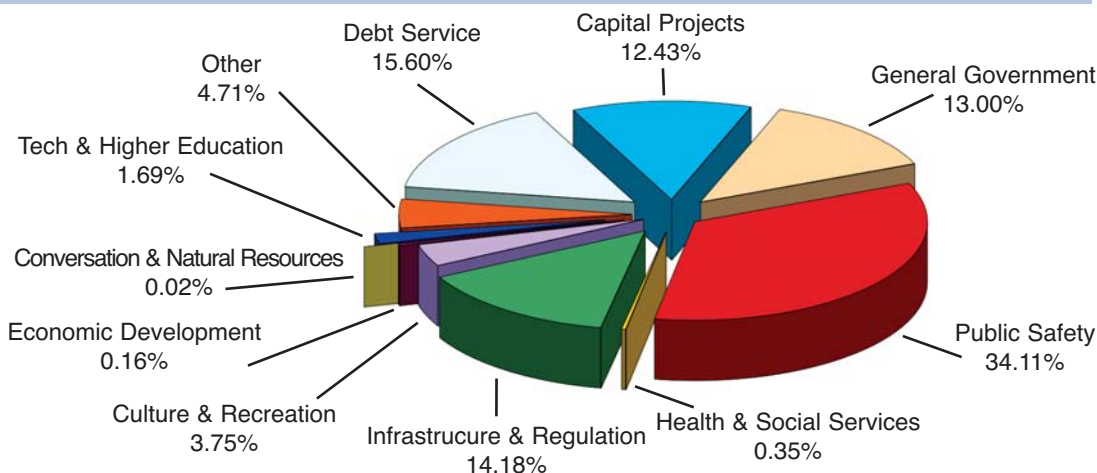
Horry County Government General Government Revenues By Function

Fiscal Year 2008 (expressed in thousands)



Horry County Government General Government Expenditures By Function

Fiscal Year 2008 (expressed in thousands)



HORRY COUNTY DEPARTMENTAL DIRECTORY

Department	Function	Phone	Address
Administrator	Manages entire County operations	915-5020	Government & Justice Center, 1301 Second Ave., Conway
Division Directors			
Administration	Manages departments within the Administration Division	915-5020	Government & Justice Center, 1301 Second Ave., Conway
Public Safety	Manages departments within the Public Safety Division	915-5400	M.L. Brown Jr. Public Safety Building, 2560 Main St., Conway
<i>Environmental Services</i>		915-5174	M.L. Brown Jr. Public Safety Building, 2560 Main St., Conway
<i>Mosquito Control & Spraying</i>		915-5174	M.L. Brown Jr. Public Safety Building, 2560 Main St., Conway
<i>Roadside Litter & Dead Animal Pick-Up</i>		915-6987	M.L. Brown Jr. Public Safety Building, 2560 Main St., Conway
Infrastructure & Regulation	Manages departments within the Infrastructure & Regulation Division	915-5160	Public Works Facility, 4401 Privetts Rd., Conway
Airport	Plans, develops, and safely operates the County's airports	448-1580	Myrtle Beach International Airport, 1100 Jetport Rd., Myrtle Beach
Assessor	Determines County tax base, appraises and lists real property for taxation	915-5040	Government & Justice Center, 1301 Second Ave., Conway
<i>21st Ave. Complex</i>		915-5043	1201 21st Ave., Myrtle Beach
<i>Mobile Home Dept.</i>	Reviews and processes applications for mobile home licenses and/or moving permits	915-5041	Government & Justice Center, 1301 Second Ave., Conway
Budget/Revenue Mgmt.	Prepares annual budget and has general oversight responsibilities	915-5060	Government & Justice Center, 1301 Second Ave., Conway
Code Enforcement	Issues building permits and inspects new construction and additions; determines flood plains	915-5090	Government & Justice Center, 1301 Second Ave., Conway
E911	Assists emergency and non-emergency callers; provides pre-arrival medical instruction	915-5100	Technology Center, 103 Elm St., Conway
Emergency Management	Develops emergency plans; develops and conducts disaster training	915-5150	Olin Blanton Building, 1201 21st Ave., Myrtle Beach
Engineering	Reviews and approves subdivision plans, inspects approved road construction, local RIDE program	915-5160	Public Works Facility, 4401 Privetts Rd., Conway
<i>Road & Drainage Hotline</i>	Assists callers by documenting concerns regarding County roads and/or drainage systems	381-8000	Public Works Facility, 4401 Privetts Rd., Conway
Finance	Develops, maintains, and administers all programs related to general accounting functions	915-5180	Government & Justice Center, 1301 Second Ave., Conway
<i>Accounts Receivable</i>	Manages billing for Horry County EMS	915-5182	Government & Justice Center, 1301 Second Ave., Conway
Fire/Rescue	Provides fire protection for unincorporated Horry County and emergency medical care for all citizens	915-5190	M.L. Brown Jr. Public Safety Building, 2560 Main St., Conway
Human Resources	Recruits new employees, trains current employees, administers employee benefits	915-5230	Government & Justice Center, 1301 Second Ave., Conway
IT/GIS	Maintains County computer system, trains employees, manages GIS	915-5240	Technology Center, 103 Elm St., Conway
Libraries	Loans library materials, provides programs of interest, provides Internet access		
<i>Administration</i>		248-1545	1008 5th Ave., Conway
<i>Conway</i>		915-READ	801 Main St., Conway
<i>Aynor</i>		358-3324	500 9th Ave., Aynor
<i>Bucksport</i>		397-1950	7657 Hwy 701 S., Conway
<i>Green Sea/Floyds</i>		392-0994	5331 Hwy 9, Green Sea
<i>Loris</i>		756-8101	4316 Main St., Loris
<i>North Myrtle Beach</i>		249-4164	799 2nd Ave., North Myrtle Beach
<i>Socastee</i>		215-4700	141 -707-Connector Rd., Myrtle Beach
<i>Stevens Crossroads</i>		399-5541	107 Hwy. 57 N. Little River
<i>Surfside Beach</i>		238-0122	410 Surfside Beach
Medically Indigent (MIAP)	Assists indigent residents with in-patient hospital bills	915-7032	Government & Justice Center, 1301 Second Ave., Conway
Museum	Protects, preserves, and teaches the history of Horry County	915-5320	438 Main St., Conway
Planning and Zoning	Subdivision review, multi-family/industrial/commercial site plan review, enforces zoning ordinances	915-5340	Government & Justice Center, 1301 Second Ave., Conway
<i>Addressing</i>	Assigns and verifies 911 addresses, makes and installs street name signs	915-5345	Government & Justice Center, 1301 Second Ave., Conway
Police	Provides law enforcement services to unincorporated Horry County	915-8341	M.L. Brown Jr. Public Safety Building, 2560 Main St., Conway
Procurement	Supervises and procures supplies and services for County departments	915-5380	3230 Hwy 319, Conway
Public Information Office	Processes Freedom of Information Act requests, spokesperson for County government	915-5390	Government & Justice Center, 1301 Second Ave., Conway
Public Works	Constructs, repairs, and maintains all County roads and drainage systems	915-5410	Public Works Facility, 4401 Privetts Rd., Conway
Recreation	Provides recreation programs for children, adults, and seniors	915-5330	307 Smith St., Conway
Registration & Election	Administers Federal, State, County, and City elections	915-5440	Technology Center, 103 Elm St., Conway
Stormwater	Establishes and enforces stormwater regulations, conducts maintenance on County drainage system	915-5160	Public Works Facility, 4401 Privetts Rd., Conway

Elected Officials:			
Auditor	Establishes fair market value, prepares, lists and receives personal property taxes	915-5050	Government & Justice Center, 1301 Second Ave., Conway
<i>Homestead Exemption</i>	Administers Homestead Exemption program locally	915-5051	Government & Justice Center, 1301 Second Ave., Conway
<i>21st Ave. Complex</i>		915-5054	Olin I. Blanton Building, 1201 21st Ave., Myrtle Beach
<i>Stevens Crossroads</i>		915-5053	Ralph H. Ellis Complex, 107 Hwy 57 North, Little River
<i>South Strand</i>		915-5052	South Strand Complex, 9630 Scipio Ln., Myrtle Beach
Clerk of Court	Processes passports, selects jurors, manages Family Court system & maintains court records	915-5080	Government & Justice Center, 1301 Second Ave., Conway
<i>Child Support Hotline</i>	Checks the status of child support and alimony payments	915-5081	Government & Justice Center, 1301 Second Ave., Conway
<i>South Strand</i>		915-5082	South Strand Complex, 9630 Scipio Ln., Myrtle Beach
Coroner	Arranges autopsies and conducts inquests	915-5110	M.L. Brown Jr. Public Safety Building, 2560 Main St., Conway
County Council	Holds public meetings, sets ordinances and policies	915-5120	Government & Justice Center, 1301 Second Ave., Conway
Delegation	Liaison between County and State government, provides Notary applications	915-5130	Old County Courthouse, 1201 Third Ave., Conway
Probate Judge	Issues marriage licenses, hears cases involving commitment, wills, and trusts	915-5370	Government & Justice Center, 1301 Second Ave., Conway
<i>Stevens Crossroads</i>		915-5372	Ralph H. Ellis Complex, 107 Hwy 57 North, Little River
<i>South Strand</i>		915-5371	South Strand Complex, 9630 Scipio Ln., Myrtle Beach
Sheriff	Court security and judicial protection, manages local Sex Offender registry, prisoner transfers	915-5450	Government & Justice Center, 1301 Second Ave., Conway
<i>Detention</i>	Incarcerates those awaiting trial, houses inmates sentenced and serving less than 90 days	915-5140	4150 J. Reuben Long Ave.
<i>Juvenile Detention</i>	Incarcerates juveniles charged with criminal offenses	915-6914	4155 J. Reuben Long Ave.
Solicitor	Prosecutes General Sessions and criminal juvenile cases	915-5460	Government & Justice Center, 1301 Second Ave., Conway
Treasurer	Bills and collects real and personal property taxes, holds sales for delinquent taxes	915-5470	Government & Justice Center, 1301 Second Ave., Conway
<i>21st Ave. Complex</i>		915-5474	Olin I. Blanton Building, 1201 21st Ave., Myrtle Beach
<i>Stevens Crossroads</i>		915-5470	Ralph H. Ellis Complex, 107 Hwy 57 North, Little River
<i>Delinquent Tax</i>		915-5470	Government & Justice Center, 1301 Second Ave., Conway
<i>South Strand</i>		915-5471	South Strand Complex, 9630 Scipio Ln., Myrtle Beach
<i>Business License</i>	Processes applications, renewals, and appeals for unincorporated Horry County	915-5620	Thompson Building, 211 Beaty St., Conway
<i>Hospitality</i>	Bills, collects, and reviews businesses for Hospitality fees	915-5220	Thompson Building, 211 Beaty St., Conway

Appointed Officials:			
Circuit Court	General Sessions (criminal) and Common Pleas (Civil)	915-5075	Government & Justice Center, 1301 Second Ave., Conway
Magistrates	Hears cases of less than \$7500, litigates between landlords and tenants, hears misdemeanors		
<i>Stevens Crossroads</i>		915-5292	Ralph H. Ellis Complex, 107 Hwy 57 North, Little River
<i>Myrtle Beach</i>		915-5293	Olin I. Blanton Building, 1201 21st Ave., Myrtle Beach
<i>Loris</i>		756-7918	James P. Stevens Building, 3817 Walnut St., Loris
<i>Aynor</i>		358-6320	W.G. Hucks, Jr. Building, 460 9th Ave, Aynor
<i>Green Sea</i>		392-1219	5527 Hwy 9, Green Sea
<i>Conway</i>		915-5290	Old County Courthouse, 1201 Third Ave., Conway
<i>South Strand</i>		915-5291	South Strand Complex, 9630 Scipio Ln., Myrtle Beach
<i>J. Reuben Long (Night Court)</i>		915-5145	4150 J. Reuben Long Ave., Conway
<i>Central Jury Court</i>	Hears Magistrate and Traffic Court cases where a jury trial is requested	915-5065	Old County Courthouse, 1201 Third Ave., Conway
<i>Central Traffic Court</i>	Hears cases involving traffic citations issued by Horry County Police and the SC Highway Patrol	915-5070	Old County Courthouse, 1201 Third Ave., Conway
Master in Equity	Decides issues involving real estate, conducts foreclosure sales	915-5310	Government & Justice Center, 1301 Second Ave., Conway
Register of Deeds	Records documents concerning land transfers, liens, plats, and other important records	915-5430	Government & Justice Center, 1301 Second Ave., Conway
Veteran's Affairs	Assists veterans of the U.S. military by administering Federal benefits	915-5480	Technology Center, 103 Elm St., Conway